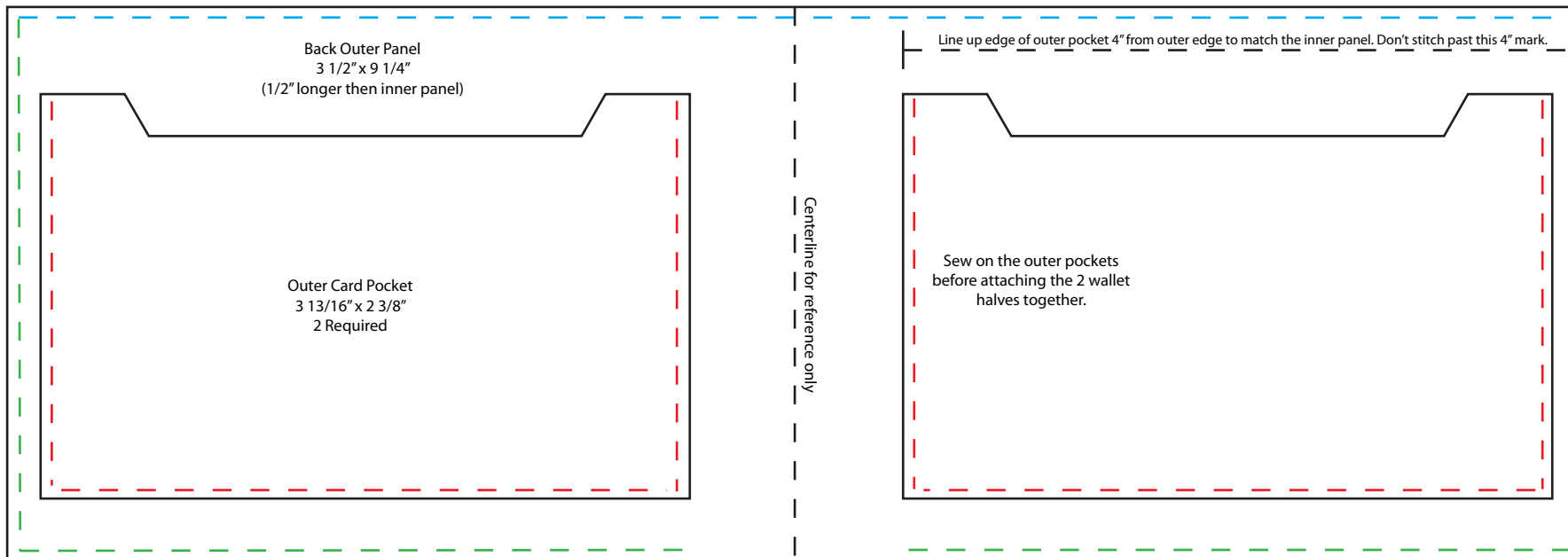


This upper stitch line (Blue) is optional and purely decorative. If you want to include it, be sure to sew it before attaching the 2 panels together. Don't accidentally sew the wallet shut by sewing it to the other half.



Be sure to set your printer to print at actual size

This stitch Line (Green) is the same as the green line shown above. This attaches the 2 halves together.
Don't sew it all the way across the bottom. Stop the stitch in about the same place as the inner panel stops. You need to leave this space so the wallet can open/close correctly.